

- [Home](#)
- [About Me](#)
- [Contact Us](#)
- [Disclaimer](#)
- [Privacy Policy](#)
- [Sitemap](#)
- [Subscribe](#)

Search in this site...



- [Software](#)
- [Desktop](#)
- [Driver](#)
- [Notebook](#)
- [Windows](#)
- [Server](#)
- [Internet](#)
- [Tricks Guide](#)

How to access HP Onboard Administrator CLI using Telnet or SSH

Article by [SiRu](#) in the category: [Server](#) · [2 Comments](#)

25% OFF HP LAPTOPS



VIEW DEALS

Download

Latest version

OS: Windows XP/Vista/7

Cost: Free

This advertisement will lead you to our website where you can download free the free zip software - 7zip

HP BladeSystem c-Class Onboard Administrator (called as OA) is the brain of c-Class Blade Enclosure (e.g: HP C7000 or C3000 Enclosure). OA basically Manages Power and cooling of all the [hardware components](#) installed in the Enclosure. Additionally OA Detects component insertion and removal in the enclosure. OA also talks to iLO of each blade and helps manage blade servers effectively.



Onboard Administrator is accessible through OA IP address (IP address is configured when you initially configure OA). Onboard Administrator (OA) can be accessed in GUI and Command Line (CLI) mode. The browser based OA GUI can be accessed by entering OA IP address in your [web browser](#); and the Command Line (CLI) mode of OA is accessible by using Telnet or SSH. HP c-Class Onboard Administrator (OA) natively support both Telnet or SSH.

To use the Command Line (CLI) mode, you need the HP Onboard Administrator IP address and a terminal application like Putty. Putty is one of the best and simplest terminal application I have ever used. Putty is available for [free download](#), please click [here](#) to [download](#) it. Download the Putty installation file from above said link and install it on your Notebook or PC.

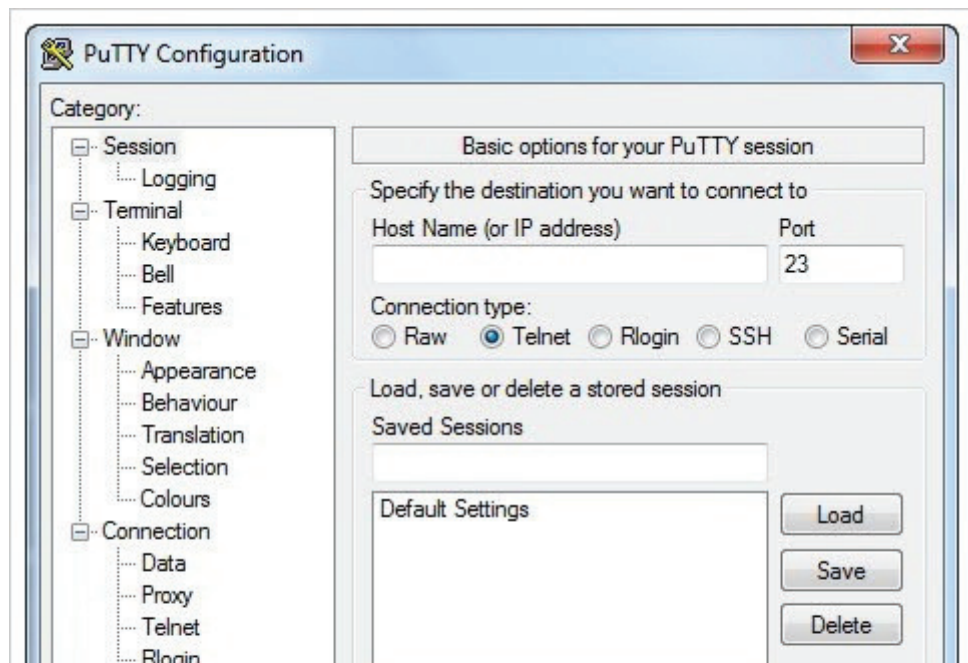
How to access OA CLI using Telnet or SSH:

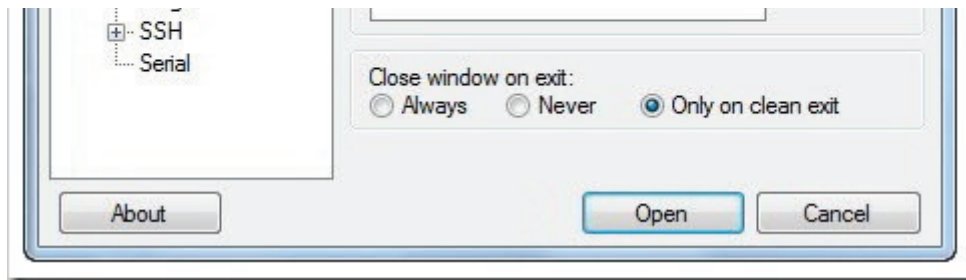
To access the Command Line (CLI) mode of HP c-Class Onboard Administrator using Telnet or SSH, you need to know the Onboard Administrator IP Address and the Administrator password of it. Telnet or SSH protocols should be enabled in Onboard Administrator settings page, and the Telnet port 23 or SSH port 22 should be open in your Network as well; otherwise you will not be able to connect to Command Line (CLI) mode.

Here, I am using Telnet to connect to OA, the IP address of OA is 225.10.22.12 (this IP is used as an example here)

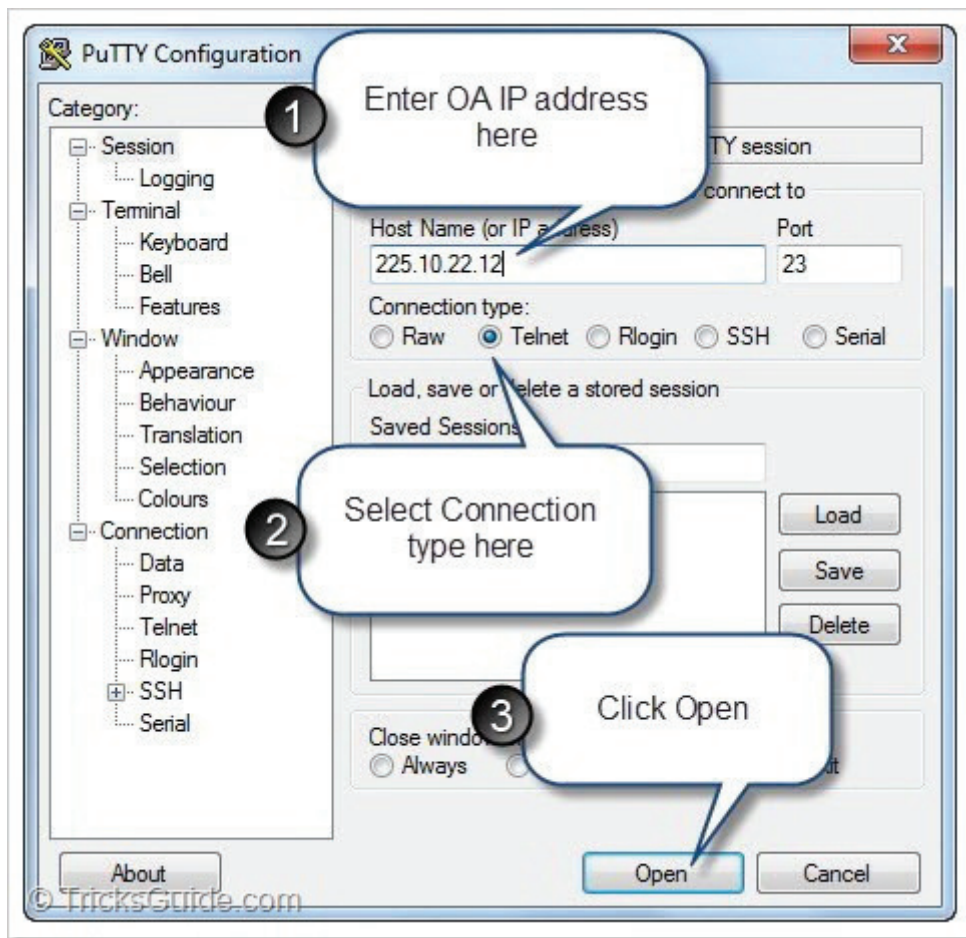
Let's begin! 😊

1. Download **Putty** from above said link and install it on your Notebook or PC.
2. Open Putty and the screen will look like the one provided below.





3. Under Host Name or IP address, enter the **OA IP address** (Example: 225.10.22.12)
4. Under Connection type, Select **Telnet** or **SSH** as per your choice (I used telnet here).



5. Click **Open** button and it will establish a Telnet or SSH Command Line mode with OA.
6. Now a black-colored Command Line window will pop-up on your Screen, this is **OA CLI**.
7. The Command Line window (CLI) will look like the one provided below.



8. Enter Onboard Administrator **User name** and Press **Enter** key
9. Enter Onboard Administrator **Password** and **Enter** key on [keyboard](#).

```
Firmware Version: 3.30
Built:
OA Bay Number: 1
OA Role: Active
OA1-C7000 login: Administrator
Password: █
```

10. Now you have logged in to the Onboard Administrator CLI mode (Shown below).

```
HP BladeSystem Onboard Administrator
(C) Copyright 2006-2011 Hewlett-Packard Development Company, L.P.

Type 'HELP' to display a list of valid commands.
Type 'HELP <command>' to display detailed information about a specific command.
Type 'HELP HELP' to display more detailed information about the help system.

OA1-C7000>
```

11. **Congratulation.** You did it!. Now Start typing all OA commands but do not screw with OA!!! 😊



Onboard Administrator [firmware](#) Version 2.00 or later support HPONCFG command in CLI mode. HPONCFG can accept RIBCL XML script and execute it. HP.com website list sample RIBCL XML scripts that could be used with HPONCFG. Enjoy!!

Share this Article:



You May Also Like:



How to Update HP Onboard Administrator Tray or OA Sleeve Firmware



How to reset or restore HP Onboard Administrator Password



How to generate Show All Report of HP c-Class Enclosures



Reset HP Blade Server slot or bay using OA Command line mode

Stay Connected with Us:



Subscribe via Email

Enter Your Email

Submit

Find us on Facebook



1,378 people like Tricks Guide.



Facebook social plugin

Tags: [Blade Server](#), [C-Class](#), [Enclosure](#), [HP](#), [OA](#), [Onboard Administrator](#), [SSH](#), [Telnet](#)



SiRu

Founder and Owner of Tricks Guide. SiRu is a Server Support Specialist, Tech Blogger and a Typical Family Man. If you'd like to connect with him, follow him on [Twitter](#) | [Facebook](#) | [Google+](#)

2 Responses to "How to access HP Onboard Administrator CLI using Telnet or SSH"

1.  Chiru says:
[August 17, 2012 at 9:12 PM](#)

Simply superub

[Reply](#)



o [SiRu](#) says:
[August 18, 2012 at 6:25 PM](#)

Thank you for your comments

[Reply](#)

Leave a Comment:

<input type="text"/>	Name (Required)
<input type="text"/>	Mail (will not be published) (Required)
<input type="text"/>	Website

Notify me of followup comments via e-mail.

Enter your email address to subscribe:

<input type="text"/>	<input type="button" value="Subscribe"/>
----------------------	--

- [Twitter](#)
- [Facebook](#)
- [Subscribe](#)
- [Digg](#)



- [Popular Articles](#)
- [Check Latest Articles](#)



• [Guide: Configure RAID using HP ACU on your HP Server 326 Comments](#)



• [Guide: Installing Windows OS using HP SmartStart CD 164 Comments](#)



• [How to Expand an Array and Extend a Logical Drive using ACU 158 Comments](#)



• [Solve Error "0xc000000f" on your HP Notebooks 74 Comments](#)



• [Latest HP SmartStart CD 8.70 \(B\) released 69 Comments](#)

Like Us on Facebook:



**Tricks Guide** on Facebook

1,378 people like **Tricks Guide**.

 Sandeep	 Aruna	 Safan	 Vishnu	 Vijay
 Naveen	 Susan	 Ja Romé	 Er Abhijeet	 Kamugunga

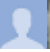



Facebook social plugin

-  1,378 Fans [Like](#)

-  87 Followers [Follow](#)
-  246 Subscribers [Subscribe](#)

Google+

Tricks Guide on

    +36

DMCA Content Protection



Awards and Recognition



TricksGuide.com Alexa Rank

Site Info tricksguide.com
Rank: 243,877
Links in: 116
Powered by  Alexa

Follow us at Twitter



© 2012 [Tricks Guide](#). All rights reserved.

[Sitemap](#) | [Privacy Policy](#) | [Contact Us](#) | [About Me](#) | [Subscribe Us](#) | [SiRu+](#)

